

SX1PTZ-37x4M Series

Explosion Proof PTZ Camera Station

Integrated with 4MP 37x Optical Zoom Sony Sensor Camera Module with optional built-in edge analytics



SX1PTZ-W



SX1PTZ-LEDW

Main Features



Marine grade
AISI316L Stainless
Steel material



Ex II 2 G Ex db op pr
IIC T6 Gb / Ex II 2 D Ex
tb op pr IIIC T80°C Db,
IP 66 / 68



4MP resolution
37x optical zoom lens



(Optional) Wi-Fi 2.4
GHz and 5 GHz



(Optional) IEEE
802.3bt PoE++
(90Watt)



(Optional) Advanced
Analytics Fire or
Smoke Detection



(Optional) Intelligent
Video Analytics for
Human, Vehicle &
Object Detection



(Optional) Simplify
Unified Intelligent
Platform & Radar
Tracking Integration

Technical Data

General		
Certification	Ex II 2 G Ex db op pr IIC T6 Gb / Ex II 2 D Ex tb op pr IIIC T80°C Db	
Protection Level	IP 66 / 68, TVS 6000V Lightning Protection, Surge Protection and Voltage Transient Protection	
Operating Temperature	-40°C to 60°C	
Relative Humidity	≤95%	
Mechanical		
Body Material	Stainless steel 316L material	
Sight Glass Material	Window with hardened mineral clear tempered glass	
	Window with Germanium glass (for SX1PTZ-G and SX1PTZ-GL model)	
Pan & Tilt Speed	Variable speed option: 0.1 ⁰ /s to 45 ⁰ /s	
Pan & Tilt Movement	Pan: 360° continuously	Tilt: -90° ~ +90°
Overall Dimension (WxHxD)	Please refer to overall dimension drawings of each model.	
Internal Usable Size for Camera Module	Ø80 x 155 mm	
Cable Entries	1 x M25 (optional additional cable entry upon request)	
Weight	Approximate 38KG	
Electrical		
Operating Voltage	AC110-240V (0.5A - 1.10A), 50/60Hz Optional: IEEE 802.3bt PoE++(90W)	
Power Consumption	Max 74W	
Thermostatically Controlled Heater	T°C on: <10°C, T°C off: >10°C	
Optional		
LED Illumination	Up to 200 meters (for SX1PTZ-LEDW model)	
Built in Fiber Optic Module	Single Mode or Multi Mode or Dual Mode (-SM or -MM or -DM model, please refer to below ordering info)	
Wi-Fi	Wi-Fi 2.4 GHz and 5 GHz	
Accessories		
Standard	Sunshield for Camera Housing	
Optional	Wall Bracket, Sunshield for Pan & Tilt Body	

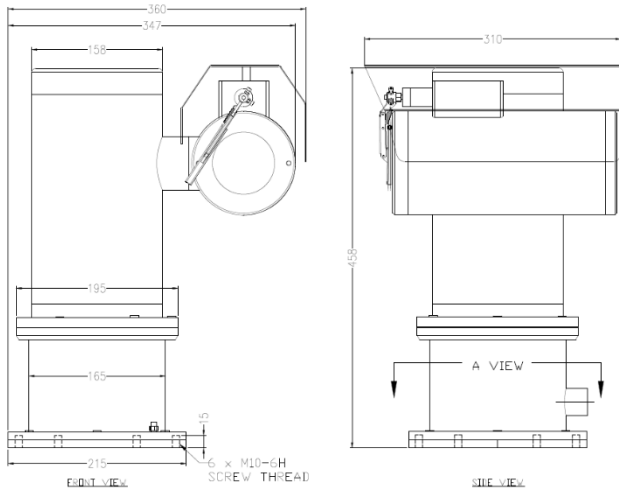
IP Camera/Lens

Sensor		
Image Sensor	1/1.8" Sony Progressive Scan CMOS	
Effective Pixels	HxV = 2688x1520 (4.53 MP)	
Lens		
Focal Length	6.5 mm (wide) to 240 mm (tele)	
Zoom	37x Optical Zoom (with up to 16x Digital Zoom)	
Aperture	FNo: 1.5 ~ 4.8	
FOV	Horizontal: 61.8° (wide), 1.86° (tele)	Vertical: 37.2° (wide), 1.05° (tele)
Close Focus Distance	1m (wide) to 1.5m (tele)	
Image		
Day/Night	Auto (ICR) / Manual (Color, B/W)	
Image Settings	Saturation, Brightness, Contrast, Sharpness, Gamma, Exposure, WDR, BLC, HLC, White Balance (WB), Defog, Electronical Image Stabilization (EIS)	
Exposure Model	Auto/Manual/Aperture Priority/Shutter Priority/Gain Priority	
Flip Image	Support	
AGC	Support	
Noise Reduction	2D / 3D	
S/N Ratio	≥ 55dB (AGC Off, Weight ON)	
Min. Illumination	Color: 0.01Lux	
Video		
Video Compression	H.265/H.264/H.264H/MJPEG	
Resolution	Main Stream: 2688x1520@50/60fps; 1080P@25/30fps; 720P@25/30fps	
	Sub Stream1: D1@25/30fps; CIF@25/30fps	
	Sub Stream2: 1080P@25fps; 720P@25/30fps; D1@25/30fps	
Video Streaming	Up to 3 individually configurable streams Configurable resolution/ frame rate/ bandwidth	
Video Bit Rate	32kbps ~ 16Mbps	
Network		
Supported Protocols	ONVIF, HTTP, RTSP, RTP, TCP, UDP	
System Integration		
General Events	Motion Detection/ Tampering / Scene Changing / SD Card / Network / Illegal Access	
Intelligent Video Analytics	(optional upon request) Human, Vehicle & Object Detections for Tripwire / Intrusion / Loitering / Abandoned Object / Missing Object / Parking Detection / Crowd Detection	
Advanced Analytics	(optional upon request) Fire Detection or Smoke Detection	
Intelligent Platform	(optional upon request) Simpnify Unified Intelligent Platform Integration, Radar Tracking Integration	
General		
Storage	TF card (up to 1TB)	

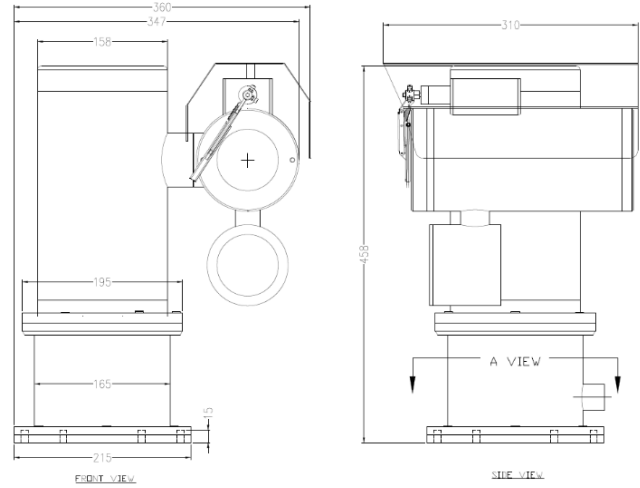
*Analog camera and other camera module options are available upon request.

*Thermal camera options are available for G model. Please contact us for the details

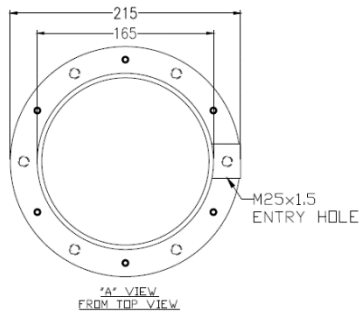
Outline Dimensions (mm)



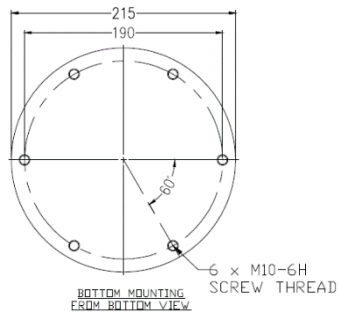
SX1PTZ-W Outline Dimensions



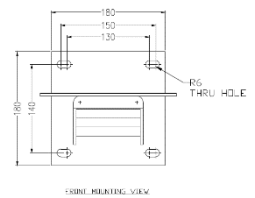
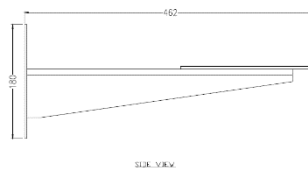
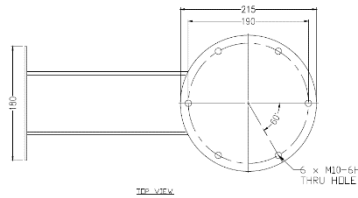
SX1PTZ-LEDW Outline Dimensions



Base View from Top

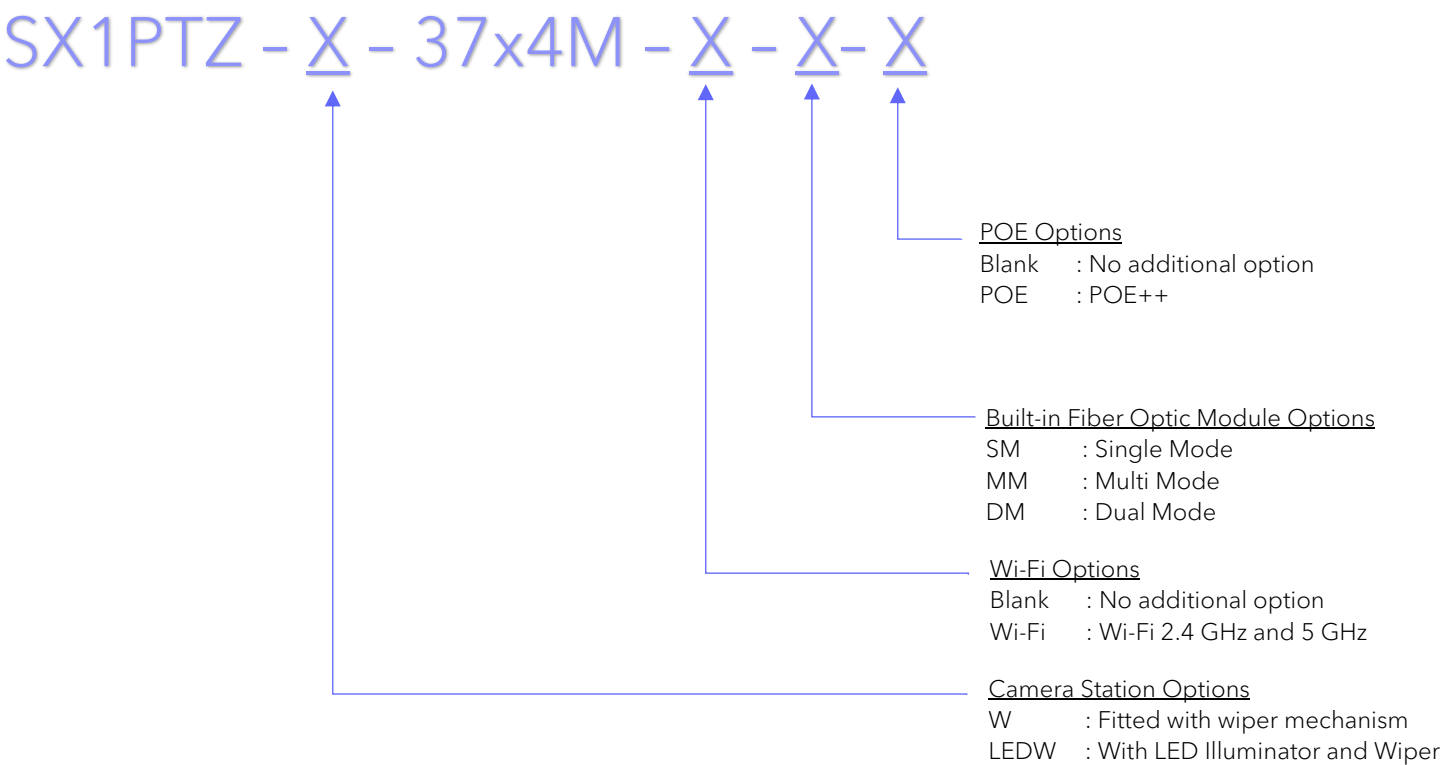


Base View from Bottom for Mounting



WB-SX1PTZ - Wall Bracket Outline Dimensions

Model & Ordering Code



Standard Accessories

SCH-SX1PTZ : Sunshield for Camera Housing

Optional Accessories

WB-SX1PTZ : Wall Bracket
SPT-SX1PTZ : Sunshield for Pan & Tilt Body